

NEW!

# HOEXTER MESIAL/DISTAL LUXATING ELEVATORS

“Throughout history dentists have been taught to extract teeth in the easiest direction -- towards the thinnest, supportive buccal bone. However, this technique leads to ischemic or traumatic bone loss of buccal bone resulting in cavernous buccal depressions that will not adequately support an implant.

However, if a mesial/distal approach is used, the buccal and lingual bone is preserved and bone regeneration occurs. This enables successful implant positioning and predictable osseointegration. This is why the **Hoexter Mesial/Distal Luxating Elevators** are designed to protect the osseous ridge in tooth extractions by luxating roots in the mesio-distal plane.”

- Design Rationale by Dr. David Hoexter

SHARP WORKING ENDS  
EASILY PENETRATE THE  
INTERPROXIMAL SPACE

TEXTURED HANDLE  
ENSURES A NON-SLIP GRIP



FIGURE 1

Use a cross-cut fissure bur for crown removal with horizontal cutting at the cervical level to expose the mandibular roots separated in the furcal zone. Place a Hoexter distal elevator in the furca on the distal aspect of the mesial root. Pull the elevator to move the mesial root in the mesial direction.

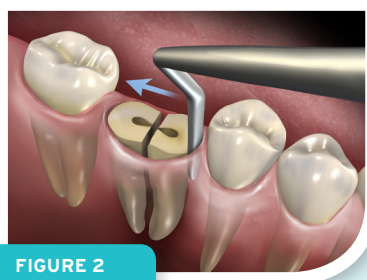


FIGURE 2

On the same mesial root, place a Hoexter mesial elevator on the mesial aspect of the root and apply distal pressure or pushing action. Repeat, loosening the root mesio-distally. Remove the hemi root with forceps in a rotary movement, occlusally.

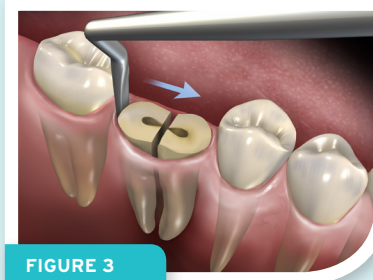


FIGURE 3

Apply the same technique as outlined in Figure 2 to the distal root of the tooth. Once this procedure is complete, bone graft material may be placed in the defect. A Guided Tissue Regeneration "GTR" membrane can then be placed on top and sutured in place.

How the best perform

**Hu-Friedy**

# HOEXTER MESIAL/DISTAL LUXATING ELEVATORS

## 3MM HOEXTER MESIAL/DISTAL LUXATING ELEVATORS

## 5MM HOEXTER MESIAL/DISTAL LUXATING ELEVATORS



### HOEXTER KIT OPTIONS

Hoexter Luxating Elevators can be purchased individually, or as a complete set. The set includes one of each instrument and an SSKC Ceramic Sharpening Stone conveniently placed in an eight instrument IMS cassette. HOEXTERKIT and HOEXKITDIN (DIN styled cassette).

### DR. DAVID HOEXTER BIO:



Dr. Hoexter currently serves as:

- Director of the International Academy for Dental Facial Esthetics
- Clinical Professor at Temple University's Periodontal and Implant Department
- Diplomate of Implantology in the International Congress of Oral Implantologists
- Diplomate American Society of Osseointegration
- Diplomate of Dental Esthetics with the American Board of Aesthetic Dentistry
- Editor in Chief, Dental Tribune, USA
- Recipient of 12 Fellowships including FACD, FICD

Dr. Hoexter received his B.A. and D.M.D. from Tufts University and maintains a private practice in New York City, specializing in periodontics, implantology and cosmetic periodontal surgery.

Visit us online at [Hu-Friedy.com](http://Hu-Friedy.com)

©2013 Hu-Friedy Mfg. Co., LLC. All rights reserved. M4684/0313

