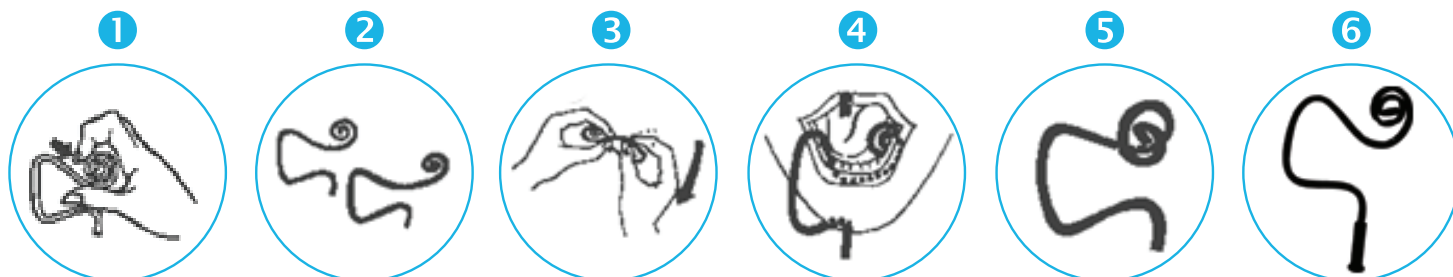


Hygoformic® Saliva Ejectors

REF ZFF / ZFFAD / ZFFAD-100

INSTRUCTIONS FOR USE



1. Bend saliva ejector/ tongue retractor (ZFF) to the desired position.
2. Shape for posterior or anterior use.
3. Bend and shape coil as needed for optimal tongue retraction.
4. Adjust for desired chin length.
5. Adjust coil over evacuation slots to prevent suctioning of soft tissue.
6. Attach saliva ejector (ZFF) to saliva ejector/ low volume evacuation line using adapter (ZFFAD or ZFFAD-100) if necessary.

CROSSTEX

Crosstex International, Inc.
6789 W. Henrietta Road, Rush, NY 14543 USA
585.359.0130 | 631.582.6777 | crosstex.com

Made in Sweden

ZFF-IFU-EN / REV E - 09/2022

In case of any serious incident that has occurred and involves our devices within the European Union, please report it to Hu-Friedy Mfg. Co., LLC and your national competent authority of the member state.

CROSSTEX™ is a trademark of Hu-Friedy Mfg. Co., LLC, its affiliates or related companies. All other product and company names referenced are trademarks of their respective owner

©2022 Hu-Friedy Mfg. Co., LLC. All rights reserved.



Not made with natural rubber latex