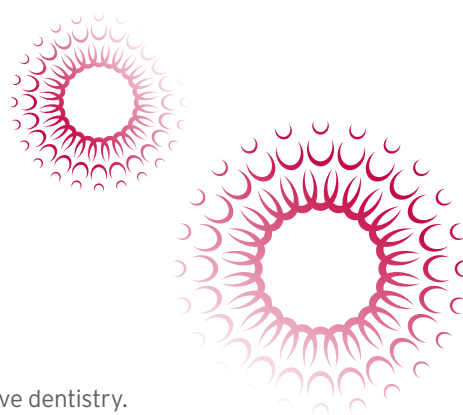
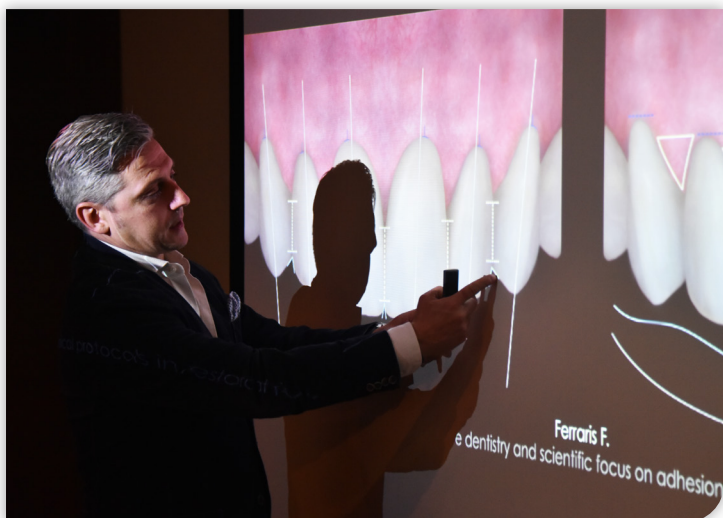


FEDERICO FERRARIS ADHESSTHETICS THECA KIT BY HU-FRIEDY



WHAT IS ADHESSTHETICS?

Esthetic results are one of the most critical elements which make up restorative dentistry.

One of the most noticeable transformations in restorative dentistry in the past decade has been that of adhesive materials. These materials are constantly being improved upon therefore the instruments used to interface with these materials also need to be considered and improved upon.

Adhessthetics is the fusion of Adhesion and Esthetics. It's the process by which protocols are completed, leading to esthetic excellence.

TNFF1/2

TNFF3/4

TNFF5/6

TNFF7/8





FEDERICO FERRARIS ADHESSTHETICS THECA KIT BY HU-FRIEDY



TNFF1/2

FF1: Manipulation of composite on buccal surfaces during direct anterior restorations, Class IV and V cases*, direct veneers restorations and general esthetic restorations.

FF2: Application of medium-great quantity of material directly on the tooth or as a material carrier.



TNFF3/4

Modelling of restorative materials on anterior and posterior teeth as well as the placement of retraction cord.



TNFF5/6

FF5: For anatomical modelling of restorations of posterior cusps or of anatomical dentinal or superficial elements on anterior teeth.

FF6: Its distinctive curved shape allows the tip to easily reach areas in both the anterior and posterior arch. Fine details can be created in restorative materials due to the tip's thin design.



TNFF7/8

Measuring thickness of enamel margin in direct restorations on anterior teeth, measuring thicknesses of direct and indirect restorations during various clinical phases, creating definition of dentinal curving.

ADHESSTHETICS THECA KIT

PARTCODE THE KIT INCLUDES:

TNFFCASS 4 Ferraris Instruments in a blue, 5-instrument IMS™ Cassette

PARTCODE DESCRIPTION

TNFF1/2 Ferraris Main Shaper

TNFF3/4 Ferraris Fine Shaper/Cord-packer

TNFF5/6 Ferraris 3D Shaper

TNFF7/8 Ferraris Direct Caliper

WHY USE AN IMS™ INFINITY SERIES™ CASSETTE SYSTEM?

By standardizing your instruments with IMS™ Cassettes, additional time and revenue is generated while extending the useful life of your Hu-Friedy instruments. Dental professionals state that by implementing IMS™ Cassettes, they save 5 to 10 minutes per procedure^ allowing the staff to spend more time on value added activities. In addition, safer transportation of soiled instruments reduces risk of injury and exposure to blood borne pathogens.



Hu-Friedy Mfg. Co., LLC: 3232 N. Rockwell Street | Chicago, IL 60618 | USA
Telephone: 1-800-Hu-Friedy (1-773-975-6100) | Website: Hu-Friedy.com

*Black's classification of cavities. Oxford Reference. Retrieved 23 Oct. 2019, from <https://www.oxfordreference.com/view/10.1093/oi/authority.20110803095509657>.

^Compared to single instrument cleaning and disinfection. Pictures: courtesy Dr. F. Ferraris.

All company and product names are trademarks of Hu-Friedy Mfg. Co., LLC, its affiliates or related companies, unless otherwise noted.

©2022 Hu-Friedy Mfg. Co., LLC. All rights reserved.

How the best perform





HU-FRIEDY KEY OPINION LEADER

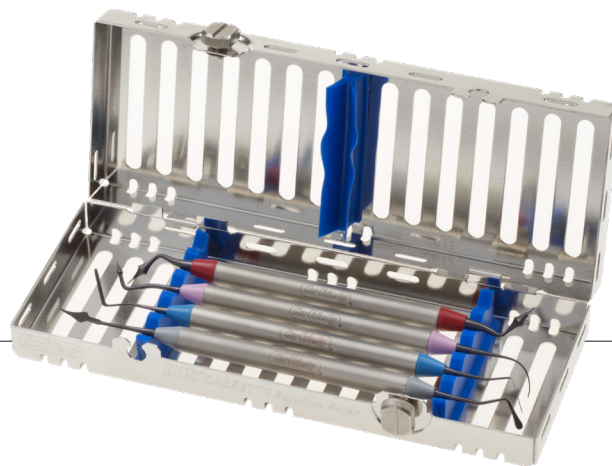
DR. FEDERICO FERRARIS

FEDERICO FERRARIS ADHESSTHETICS THECA KIT BY HU-FRIEDY



Born on 10th of August 1974 in Alessandria, Italy. Graduated in Dental School at Genoa University as DDS in 1999. ADHESSTHETICS founder. International speaker at dental congresses and courses in more than forty Countries. Active Member of the following Academies: EAED (European Academy of Esthetic Dentistry), AIC (Italian Academy of Conservative), IAED (Italian Academy of Esthetic Dentistry) and SCAD (Society for Color and Appearance in Dentistry). Member of AARD (American Academy of Restorative Dentistry) and IAAD (International Academy for Adhesive Dentistry). He is President Elect of SCAD for the biennium 2021-2022 and of AIC for the biennium 2022-2023 DSD (Digital Smile Design) Master since 2013. Member of the Editorial Board of IJED (International Journal of Esthetic Dentistry) since 2010. Co-author of several Italian and International scientific publications. Dental practice in Alessandria, focusing in Operative Dentistry and Prosthodontics.

www.federicoferraris.com*



FEDERICO FERRARIS ADHESSTHETICS THECA KIT BY HU-FRIEDY

| TNFFCASS

The **Adhesthetic Theca** kit is comprised of four unique instruments designed by Dr. Federico Ferraris. The instruments are meant to assist clinicians in various restorative fields to achieve predictable results and operative excellence.

Adhesthetic Theca instruments are coated with Aluminum Titanium Nitride (AlTiN). This dark coating offers superb contrast in comparison to composite materials and tooth structure. The coating is also incredibly slick, resisting the adhesion of sticky composite materials.

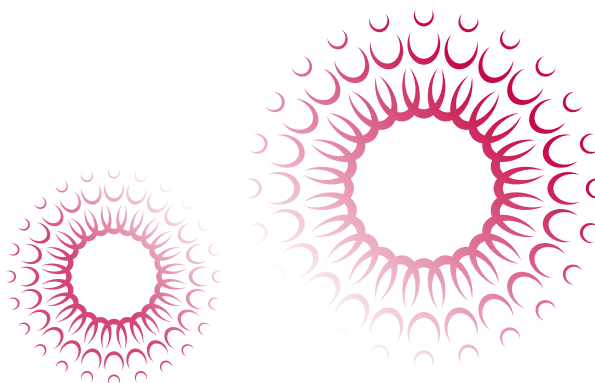
The instruments' smooth handle is ergonomic and lightweight and each instrument has its own distinct set of color cones, making instrument identification simple.

The kit is complete in an IMS™ Cassette which provides efficiency before, during and after the procedure.

“Incorporating these techniques into everyday procedures allows for predictable results in direct and indirect restorative dentistry. Constantly challenging yourself and continuously making personal improvements is the personal motto of Federico Ferraris.”

Do Better Than Yesterday

—DR. FEDERICO FERRARIS



Visit us online at **Hu-Friedy.com**

* Adhesthetic is not owned by or affiliated with Hu-Friedy
All company and product names are trademarks of Hu-Friedy Mfg. Co., LLC, its affiliates or related companies, unless otherwise noted.
©2022 Hu-Friedy Mfg. Co., LLC. All rights reserved.

How the best perform





FEDERICO FERRARIS ADHESSTHETICS THECA KIT BY HU-FRIEDY CLINICAL USE

TNFF1/2 FERRARIS MAIN SHAPER



FF1

Manipulation of composite on vestibular surfaces during direct anterior restorations, Class IV and V cases, direct veneers restorations and general esthetic restorations. The tip's lance shape and flexibility allow for it to adapt to restorative material (Fig. 6) and is also effective in removing excess material from the vestibular region by using its edge (Fig. 7). Its flexibility allows for restorative materials to be manipulated with a delicate touch. It is sturdier than a standard brush however less rigid than a standard spatula.

FF2

Application of medium-great quantity of material directly on the tooth or as a material carrier.

Its round shape and rigidity allow for the manipulation of restorative materials in wide cavities. It is also effective when placing material on wide surfaces (Fig. 8).



Fig. 6



Fig. 7



Fig. 8

TNFF3/4 FERRARIS FINE SHAPER / CORD PACKER



FF3 & FF4

Modelling of restorative materials on anterior and posterior teeth as well as the placement of retraction cord. A distinctive characteristic of this spatula (FF3 straight and FF4 angled) is its flexibility. Its thin design allows for precise modelling (Fig. 9, 10, 11, 12). It is particularly useful for deep cavities. It is also helpful during procedures where high magnification is used because its length allows for easier access to these deep regions while not interfering with the clinician's field of vision (Fig. 13). Retraction cord can be placed precisely with the thin instrument tip (Fig. 14).



Fig. 9

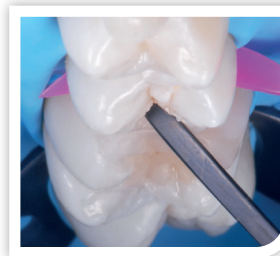


Fig. 10

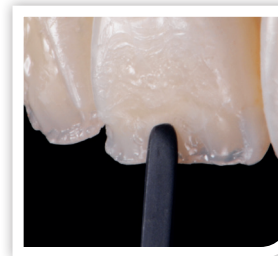


Fig. 11

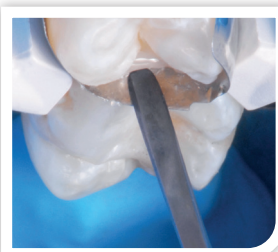


Fig. 12



Fig. 13



Fig. 14



FEDERICO FERRARIS ADHESSTHETICS THECA KIT BY HU-FRIEDY CLINICAL USE

TNFF5/6 FERRARIS 3D SHAPER



FF5

Anatomical modelling of restorations of posterior cusps (Fig. 15, 16, 17) or of anatomical dentinal or superficial elements on anterior teeth (Fig. 18).

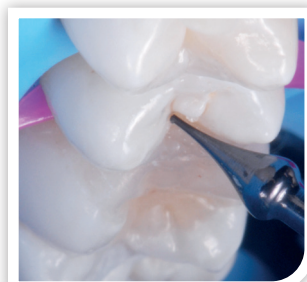


Fig. 15



Fig. 16

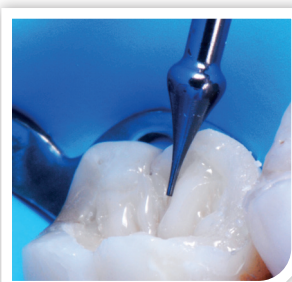


Fig. 17



Fig. 18

FF6

Sculpting thin sulcus as well as finishing of the margins and thin modellings on posterior and anterior direct restorations (Fig. 19, 20, 21, 22). Application of viscous material in deep cavities (Fig. 23), positioning of flowable materials in occlusal sulcus (Fig. 24), coating low viscosity materials (Fig. 25), removal of excess high viscosity cementation material (Fig. 26) and control of margins after cementation (Fig. 27). Its distinctive curved shape allows the tip to easily reach areas in both the anterior and posterior arch. Fine details can be created in restorative materials due to the tip's thin design.

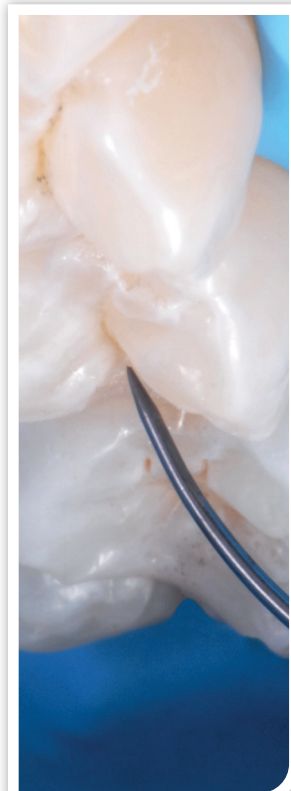


Fig. 19

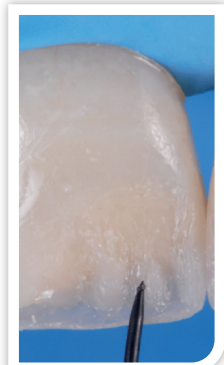


Fig. 20

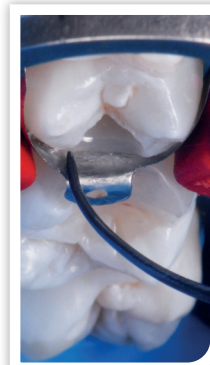


Fig. 21



Fig. 22

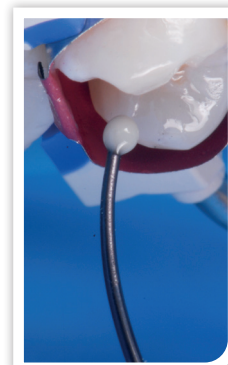


Fig. 23

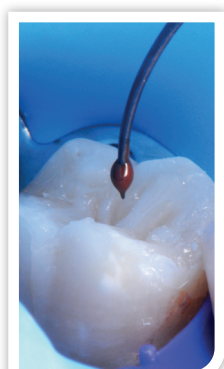


Fig. 24



Fig. 25



Fig. 26



Fig. 27



FEDERICO FERRARIS ADHESSTHETICS THECA KIT BY HU-FRIEDY CLINICAL USE

TNFF7/8 FERRARIS DIRECT CALIPER



FF7 & FF8

Measuring thickness of enamel margin in direct restorations on anterior teeth (Fig. 28), measuring thicknesses of direct and indirect restorations during various clinical phases (Fig. 29), creating definition of dentinal curving (Fig. 30).

This instrument is a restorative probe with a flat head (not rounded, as most periodontal probes) with grooves at 0.5mm increments. The tip is angled at 45° which when aligned against the preparation chamfer, allows for the thickness of dentinal material and residual buccal enamel to be determined.

The FF7 measures an enamel thickness of 0.5mm (the universal thickness in the third medium of the crown), while the FF8 measures a thickness of 0.9mm (which is preferred in incisal areas, or times when the thickness of the natural enamel is of critical importance). The shape of the dentin in the incisal direction in addition to the thickness to the margin can be determined with this instrument.



Fig. 28



Fig. 29

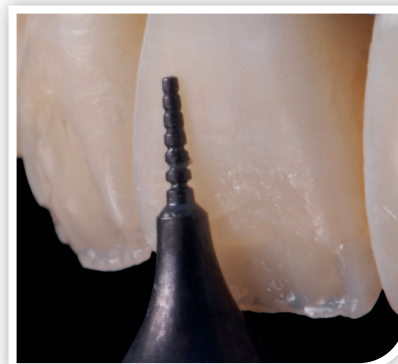


Fig. 30

FEATURES OF THE XTS™ TECHNOLOGY:

A dark Aluminum Titanium Nitride (AlTiN) coating provides a smooth, hard surface which holds a sharp cutting edge. The dark XTS™ coating also enhances visibility by providing high contrast and also reduces light reflection from operator and microscope lights.