



One Cartridge. One Year of Treated Water.

- The DentaPure™ cartridge is **EPA registered**¹ to provide **compliant treatment water for one year or 240L of water**, ensuring that your practice meets current **EPA microbiological water quality** standards of <500 CFU/mL.
- Significantly less maintenance - **no routine shocking, fewer protocols** and **no cartridge change outs** every few months.

For More Information, visit HuFriedyGroup.com/DentaPure

DentaPure™ Cartridge Waterline Treatment



Compliant¹

- DentaPure™ DP365B and DP365M cartridges continuously provide one-year or 240L of compliant² procedural water that meets the current EPA standard (<500 CFU/mL) for potable water.
- DentaPure™ DP40B cartridges continuously provide 60 days 40L of compliant¹ procedural water.
- EPA registered to provide ≤200 CFU/mL for one-year or 240L of water.¹
- FDA 510k.²
- Use is not restricted by the EPA Rule BMP for dental amalgam waste.³

Effective

- Reduces patient and staff bacterial exposure by eluting elemental iodine into water used during patient treatment.
- Elemental iodine (I_2) is non-allergenic – no protein is attached to it.⁴

Simple

- For use in independent water bottles and dental units municipally plumbed to city water.
- For use with all potable water.
- Minimal maintenance required following installation.
- Fewer protocols reduce the possibility of human error.
- No routine shocking.
- Bottle-style cartridges can be quickly and easily installed by office staff.
- Dispose of depleted cartridges in the regular office trash.
- Cost-effective.

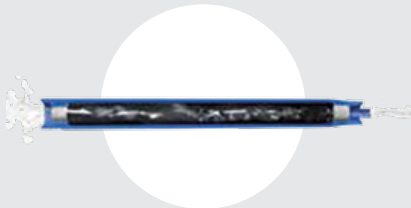
Reliable

- Will not interfere with dental materials and bonding.⁵
- No concerns with corrosion or etching.⁶
- No harsh chemicals.
- Replacement reminder program in place.
- Dedicated DUWL technical support.

How does the DentaPure™ cartridge work?



The DentaPure™ cartridge contains non-allergenic iodinated resin beads.



As water passes through, the resin releases 2 - 6 ppm of elemental iodine (I_2) during a typical dental treatment.

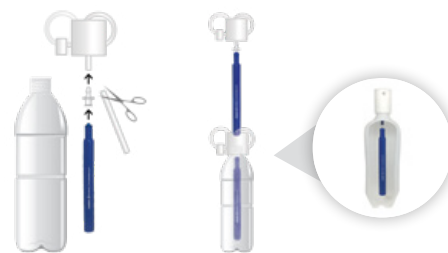


The elemental iodine controls the bacteria, keeping treatment water compliant.²

Easy Installation in Minutes

Independent water bottle systems

The DentaPure™ DP365B and DP40B cartridges are easily installed by dental office staff via included luer fitting onto your dental unit's existing pickup tube.



Municipally plumbed systems

The DentaPure DP365M cartridge for units plumbed directly to city water installs in the Jbox via included poly-flo fittings. Service Technician installation recommended.



All claims made based on use with potable water.

PRODUCT	SKU
DentaPure™ 365-Day Independent Water Bottle Cartridge	DP365B
DentaPure™ 60-Day Independent Water Bottle Cartridge	DP40B
DentaPure™ 365-Day Municipal Cartridge	DP365M

Find out how simple installation is, visit [HuFriedyGroup.com/DentaPure](https://www.hufriedygroup.com/DentaPure)

1) DentaPure™ cartridge EPA Est. No. 52252-MN-001 / EPA Reg. No. 74245-5 / FDA 510K #K992893 2) Compliance with current EPA potable water standard <500 CFU/mL 3) <https://www.epa.gov/eg/dental-effluent-guidelines-documents> 4) Schabelman E., Witting M. The relationship of radiocontrast, iodine, and seafood allergies: a medical myth exposed, J Emerg Med. 2010 Nov;39(5):701-7. doi: 10.1016/j.jemermed.2009.10.014. Epub 2010 Jan 4. 5) Puttaiah R. Effects of Low Grade Iodine in Dental Unit Waterlines On Shear Bond Strength of a Dentin Bonding Agent, Baylor College of Dentistry 6) Data on file.

All company and product names are trademarks of Hu-Friedy Mfg. Co., LLC, its affiliates or related companies, unless otherwise noted. Marks not registered in all jurisdictions. HuFriedyGroup.com

©2025 Hu-Friedy Mfg. Co., LLC. All rights reserved. 2509