

HUFRIEDYGROUP KEY OPINION LEADER DR. DIDIER DIETSCHI

COMPOSCULP
COMPOSITE INSTRUMENTS COLLECTION



Focus on:
Adhesive Dentistry



Country: **Switzerland**



Favourite Instrument:
PFIDD1/2



Website:
edudentinternational.com



Inspired by: **European &
American Academy of
Esthetic Dentistry**



VISIT THE
KOL COMMUNITY



Success usually results from an ideal combination of proper clinical procedures, good product and well designed instruments.

Dr. Didier Dietschi



COMPOSCULP COMPOSITE INSTRUMENT COLLECTION

Excellence and Innovation in Composite Restorations.

CompoSculp instruments were designed by Dr. Didier Dietschi with the intention of aiding clinicians in achieving superior esthetic restorations. The CompoSculp kit is comprised of 5 complementary composite instruments for both anterior and posterior restorations.



PFIDDCASS

Cassette of CompoSculp Instruments

Visit us online at **HuFriedyGroup.com**

COMPOSCULP COMPOSITE INSTRUMENT COLLECTION

LIGHTWEIGHT HANDLES

Sleek and smooth handle and durable ResinEight™ handle options allow for maximum comfort, reduced hand fatigue, and an increased level of tactile control.*

*Source: Gerwatoski, L.J., McFall, DB, Stach, D.: Carpal Tunnel Syndrome: Risk Factors and Preventive Strategies for the Dental Hygienist. Journal of Dental Hygiene, February 1992.

REMARKABLE RESTORATIONS

Highly polished stainless steel working ends resist composite material, ensuring a stunning final restoration.

COLOR-CODING INDICATORS

Each CompoSculp instrument exhibits a color identifier, ensuring the desired instrument is at hand.

RELIABLE HUFRIEDYGROUP QUALITY

Working ends crafted with Immunity Steel™ Alloy, an optimal blend of carbon and chromium providing strength

Fact

Proficient and meticulous attention to detail are required when constructing an aesthetic restoration.

Challenge

It can be difficult to identify the optimal set of instrumentation needed for placement, sculpting and shaping composite material.

Solution

The CompoSculp instrument set consists of an array of working end designs to aid in superior restoration achievement.



IM6053

5-Instrument IMS™ Signature Series™ Exam Cassette

WHY YOU SHOULD USE AN INSTRUMENT MANAGEMENT SYSTEM (IMS):

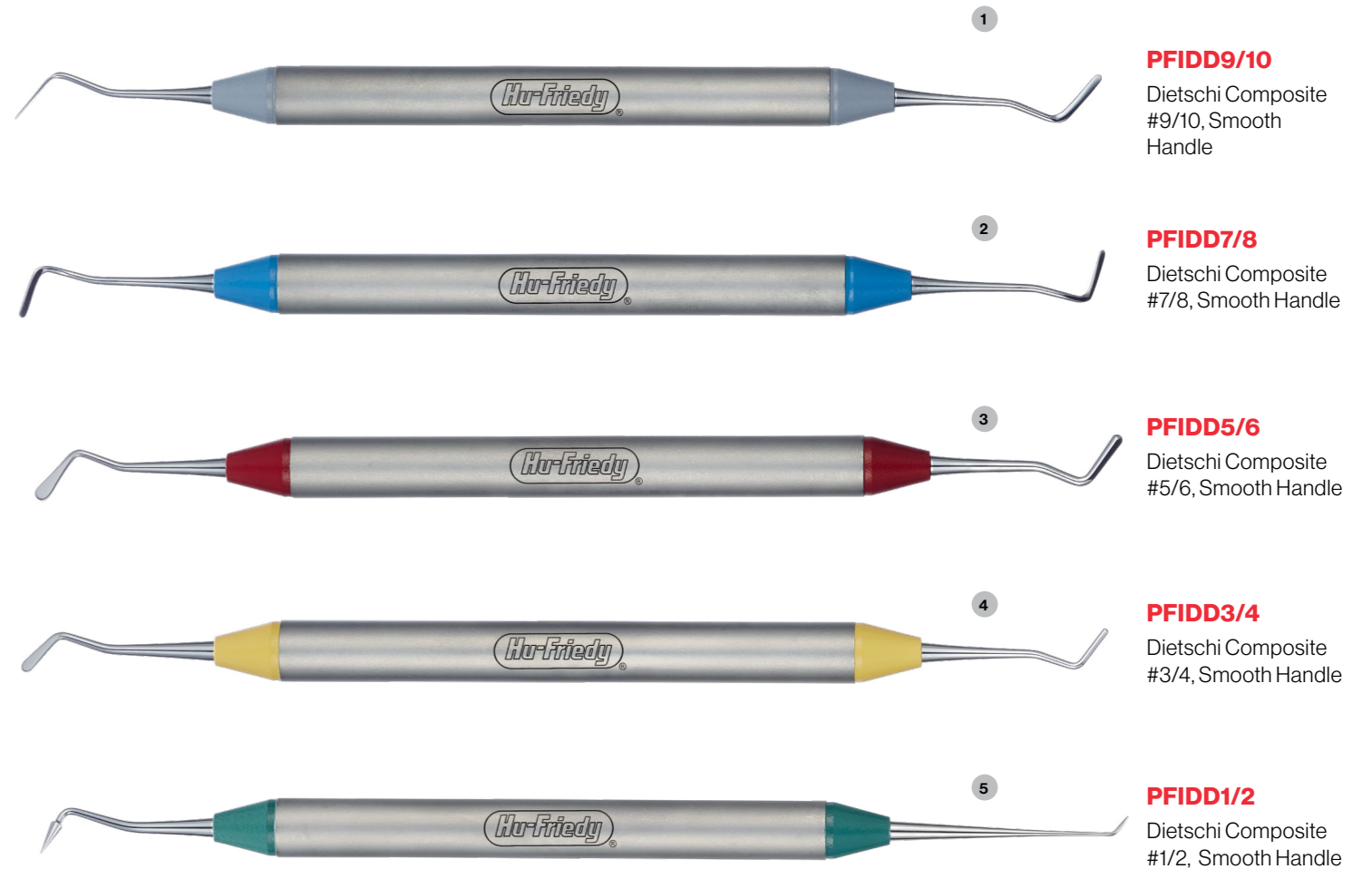
By standardizing your instruments with IMS, additional time and revenue is generated while extending the useful life of your HuFriedyGroup instruments. Dental professionals state that by implementing IMS, they save 5 to 10 minutes per procedure allowing the staff to spend more time on value-added activities*. In addition, safer transportation of soiled instruments reduces risk of injury and exposure to blood borne pathogens.

*When compared to single instrument decontamination. Based on market survey results.

DISCOVER
MORE AT IMS
WEBPAGE



COMPOSCULP COMPOSITE INSTRUMENT COLLECTION



Grip Color	Description	Smooth Handle SKU	ResinEight™ Handle SKU
●	Dietschi Composite #1/2	PFIDD1/2	PFIDD1/28
●	Dietschi Composite #3/4	PFIDD3/4	PFIDD3/48
●	Dietschi Composite #5/6	PFIDD5/6	PFIDD5/68
●	Dietschi Composite #7/8	PFIDD7/8	PFIDD7/88
●	Dietschi Composite #9/10	PFIDD9/10	PFIDD9/108
	Dietschi Composite Roll-Up of 5 Instruments	PFIDDROLL	PFIDDROLL8

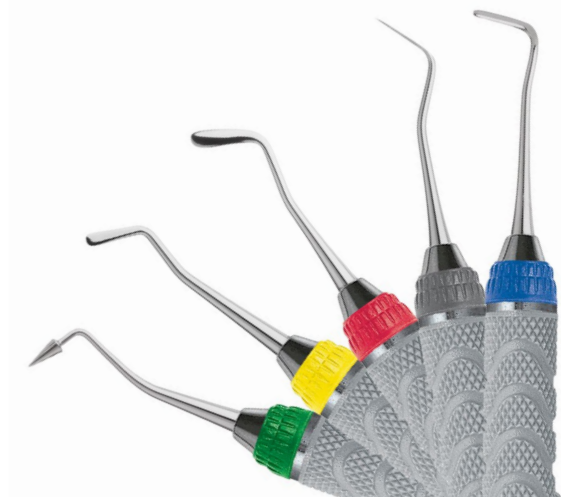
HANDLE OPTIONS



SMOOTH HANDLE



RESINEIGHT™ HANDLE



COMPOSCULP CASE STUDY BY DR. DIDIER DIETSCHI ANTERIOR PROCEDURE



FIGURE 1

PREOPERATIVE VIEW

Enamel opacities will be corrected and anterior teeth form enhanced.

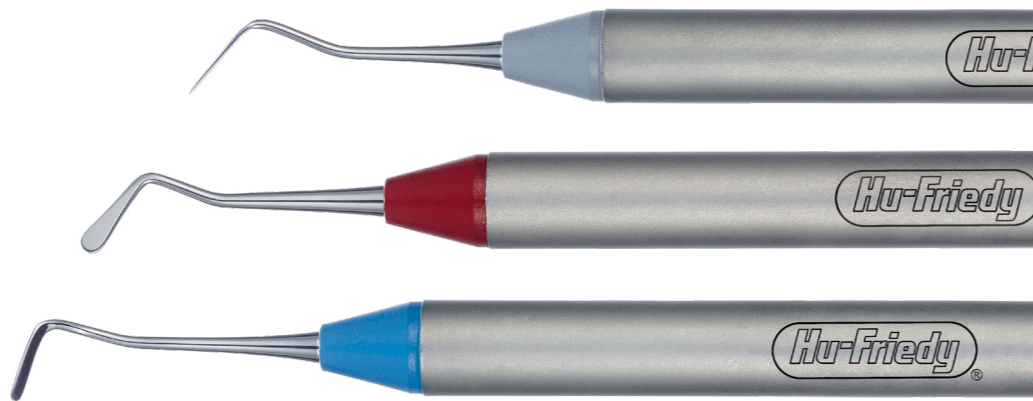


FIGURE 2

Rubber dam is placed to achieve proper isolation. Restorative site receiving treatment is prepped.



FIGURE 3

Composite material is placed inside the buccal cavity with the paddle end of PFIDD5/6.



FIGURE 4

Composite material is applied and spread using the fine blades of the PFIDD9/10.



FIGURE 5

Shaping and contouring the composite to modify proximal tooth contours is achieved by use of the off-angle blades on the PFIDD7/8.

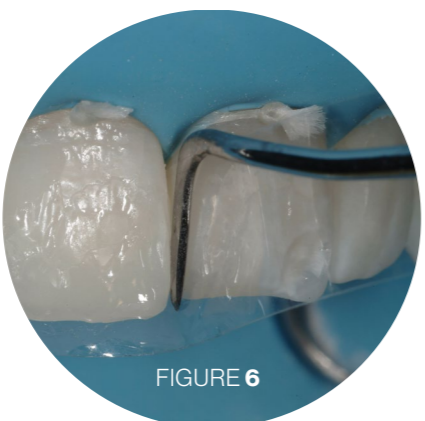


FIGURE 6



FIGURE 7

After finishing and polishing, the restoration is complete.

COMPOSCULP CASE STUDY BY DR. DIDIER DIETSCHI POSTERIOR PROCEDURE

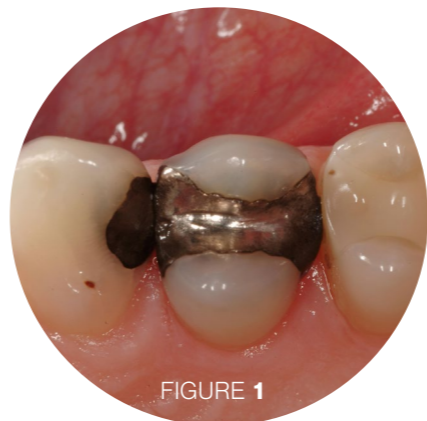


FIGURE 1

PREOPERATIVE VIEW

Defective amalgams and composite restoration in need of replacement

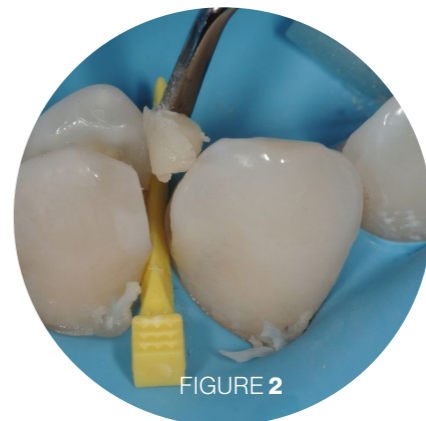


FIGURE 2

Rubber dam and a rubber dam clamp is placed to achieve proper isolation prior to removing defective restorations. The spatula end of the PFIDD3/4 is used to insert composite material in the distal cavity on the canine

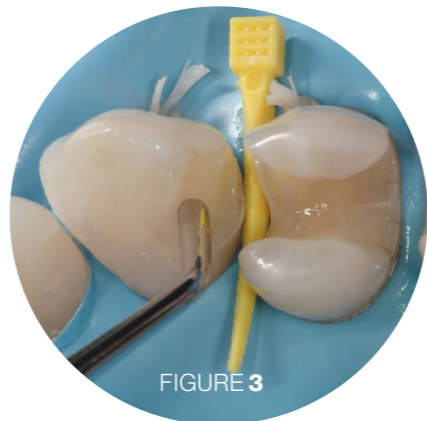
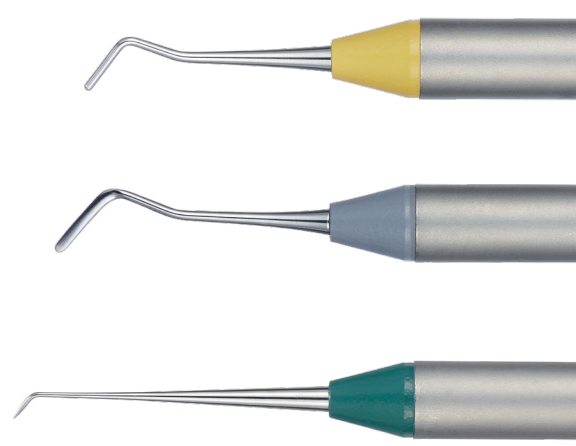


FIGURE 3

The plugger end of the PFIDD3/4 is utilized next to smooth the material

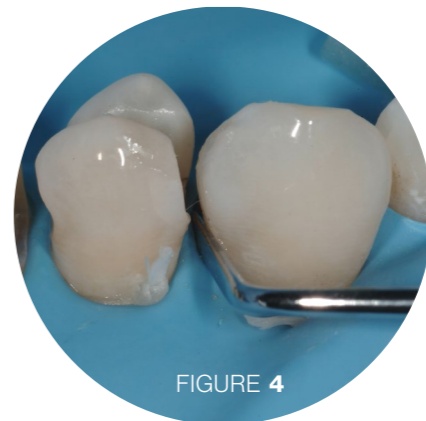


FIGURE 4

Proximal and distal contours are shaped and marginal ridges formed with the thin, sharp ends of PFIDD9/10

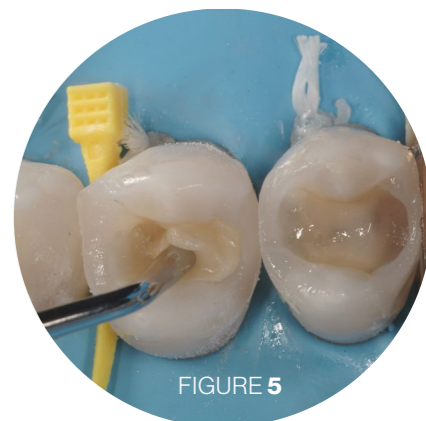


FIGURE 5

Composite is placed into the occlusal cavities using the plugger end of PFIDD3/4



FIGURE 6

Shaping and sculpting of dentin and enamel layers is achieved utilizing the conical and explorer end of PFIDD1/2

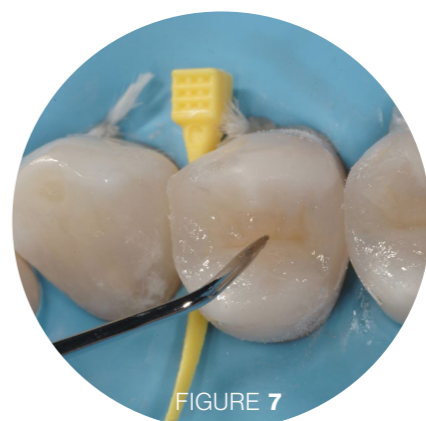


FIGURE 7



FIGURE 8

POSTOPERATIVE VIEW

EDUDENT INTERNATIONAL PRO by Didier Dietschi

The mission of Edudent International is to select some of the best programs available worldwide in Aesthetic Dentistry, Adhesive Dentistry, Prosthodontics and Implantology as well. Edudent International Pro serves as a link between top opinion leaders, selected dental industry partners and groups of professionals and individuals who want to bring their dentistry to a new level!

Learn from acclaimed experts and interact with them within a small group

If you think like us that your patients shall profit from the best of current technology and the latest clinical and scientific developments, Edudent International Pro is the right education partner for you. Because information on advanced clinical procedures is not easily accessible or is only fragmentally provided during large congresses or dental events, we have selected programs with limited attendance, which allow a direct interaction with the expert and a comprehensive, unsurpassed learning experience.



COURSES:

- **CONSERVATIVE & INTERCEPTIVE REHABILITATION of TOOTH WEAR: a comprehensive treatment approach using adhesive techniques.**
- **POSTERIOR BIO-ESTHETIC RESTORATIONS: Bio-mechanics and functional concepts in synergy.**
- **CONSERVATIVE & INTERCEPTIVE REHABILITATION of TOOTH WEAR: a comprehensive treatment approach using adhesive techniques.**
- **STATE OF THE ART in ANTERIOR VENEERING TECHNIQUES with Prof. Pascal Magne.**
- **ANTERIOR BIO-ESTHETIC RESTORATIONS.**

Hu-Friedy Mfg. Co., LLC • 3232 N. Rockwell St., Chicago, IL 60618 • U.S.A.
Telephone: **1-800-Hu-Friedy** (1-773-975-6100)

All company and product names are trademarks of Hu-Friedy Mfg. Co., LLC, or its affiliates or related companies, unless otherwise noted.
©2023 Hu-Friedy Mfg. Co., LLC. All rights reserved. HFL-784/0523