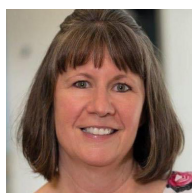




12 PREV EVALS 27 YEARS EXP

I used much less pressure when scaling, and tactile sensitivity was off the charts.

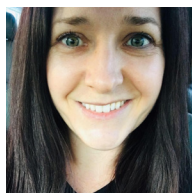
Lydia Pope, RDH  
New Lenox, IL



11 PREV EVALS 31 YEARS EXP

Angled lower anterior teeth were a breeze to clean without pinching my handle firmly.

Maureen Curran, RDH  
Norwalk, CT



14 PREV EVALS 17 YEARS EXP

I really enjoyed the feel/grip of the new handle design and liked the sharpness of the blade.

Jennifer Porter, RDH  
Jacksonville, FL

## HU-FRIEDY

# Harmony Ergonomic Scalers and Curettes

4.6

Dental PRODUCT SHOPPER  
BEST PRODUCT

*Combines TrueFit technology with EverEdge 2.0 sharpness for state-of-the-art ergonomics and performance that work in harmony*



It's no secret that most dental professionals experience fatigue, pain, and discomfort of the hand, wrist, or arm on a daily basis. But since the COVID pandemic surfaced, many dentists and hygienists have been forced to switch from power instruments to hand instruments, which often exacerbates any previous work-related discomfort from repetitive motion. "I was getting pain in my thumb joint from having to mostly hand scale since COVID," described Deborah Deal, CRDH.

Hoping to relieve fatigue and discomfort for clinicians, Hu-Friedy developed an innovative and ergonomic hand-scaling solution, the new Harmony Ergonomic Scalers and Curettes. Combining Hu-Friedy's proprietary TrueFit technology with its EverEdge 2.0 blade sharpness technology, the Harmony instruments provide an ergonomic solution that reduces a clinician's pinch force grasp, improves grip, and requires less pressure on the tooth—perhaps extending the length of a dental professional's career.

For Deal, and many other dentists and hygienists who evaluated the Harmony scalers and curettes for DPS, these instruments provide much-needed relief from daily discomfort. "The Harmony design allows me to use a lighter grip to remove deposits, and it is less stressful on my finger joints," Deal stated.

### TrueFit Technology & Reduced Hand Fatigue

The Harmony ergonomic scalers and curettes are designed with Hu-Friedy's proprietary TrueFit technology, a sensor-based system derived by measuring millions of data points for pinch force in the finger

and pressure applied to the tooth when scaling. Reducing pinch force by up to 65% and requiring less pressure to the tooth when scaling, Hu-Friedy says the instrument's design helps to alleviate hand fatigue and injury risk due to repetitive motion. With EverEdge 2.0 technology, the working ends of the Harmony instruments are 72% sharper than others, according to Hu-Friedy, enabling calculus removal with less pressure and biomechanical stress on fingers and hands.

"The ergonomics [of the Harmony instrument] helped remove deposits easier and with less hand fatigue," said Mary Aigeldinger, RDH, and hygienist Kim Attanasi agreed. "The design allowed me to scale without using too much pressure, which, in turn, prevented fatigue." For Maureen Curran, RDH, "the instrument allows for lighter grasp, therefore reducing hand fatigue," and Michaela Popa, DMD, said the instruments are very sturdy, precise, and cause less hand fatigue. "Due to COVID, many patients have neglected their oral health; a majority had some type of periodontal disease and subgingival calculus. Hand and wrist fatigue has been a major problem," said Lydia Pope, RDH. "This scaler worked effortlessly. I used much less pressure when scaling, and it reduced my hand and wrist fatigue," she explained. "I really like the design of the scaler combined with the EverEdge 2.0 technology," said Jennifer Porter, RDH.

### Grasp/Grip and Tactile Sensitivity

The Harmony handle easily adapts to each clinician's individual grasp, while the optimized

## takeaways

- Designed with TrueFit technology to maximize ergonomics and reduce pinch force
- Scaler blade is 72% sharper to enable calculus removal with less pressure
- Harmony handle adapts to each clinician's individual grasp
- Extended silicone grip provides a secure and nimble grasp and optimal tactile sensitivity



Kim Attanasi  
PhD, MS, RDH  
Staten  
Island, NY

"The instrument's design allowed me to scale without using too much pressure, which, in turn, prevented fatigue."

shape and extended silicone grip are well balanced, providing a secure and nimble grasp with optimal tactile sensitivity. "I like the shape and feel in my hand that enables a light grip," said Deal, and Lauren Dennis, RDH, said, "The new ergonomic shape compared to the original handle provides more comfort, a noticeable difference in pinch force reduction." Pamela Emard, RDH, stated, "At the end of the day when my hands are beginning to fatigue, I didn't have to worry about the instrument slipping from my grasp." Curran said, "Angled lower anterior teeth from the lingual were a breeze to clean without pinching my handle firmly." Pope said the handle's shape allowed her to apply a looser, more relaxed grip while removing deposits, and it was easy to feel and remove subgingival calculus. "Tactile sensitivity was off the charts," she added.

### Increased Efficiency

Harmony Ergonomic Scalers and Currettes "make my job easier and quicker!" exclaimed Laura Inman, RDH, and hygienist Brooke McCorvey said she "loves the way it adapts. Ease and efficiency are pretty awesome." Pope used a Harmony scaler on subgingival calculus and said, "Less strokes were used per tooth. Calculus was removed with ease, [and there was]

less pain and discomfort for the patient." The Harmony design allowed Curran "to save time during appointments and have less aches at the end of the day," and Aigeldinger said she wanted to use the instrument frequently, especially when a patient had heavy, hard deposits.

### Overall Satisfaction

Noting that proper instrumentation "makes our jobs more efficient with less

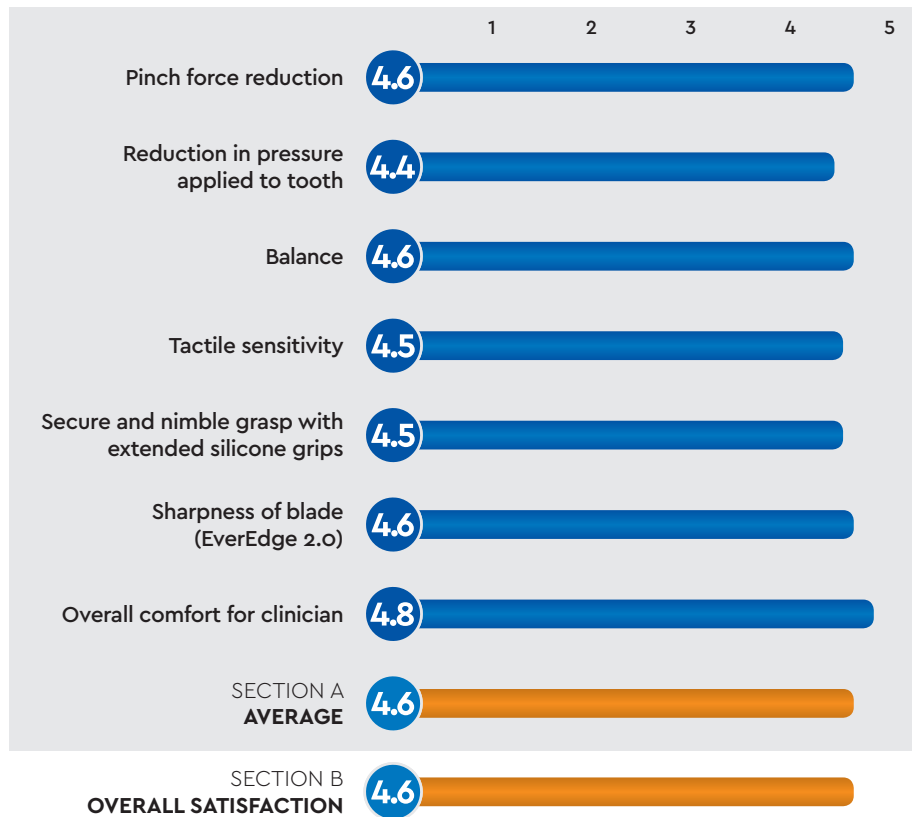
stress," Curran said, "I really like the overall Harmony design and plan to order more." Pope said she likes everything about the Harmony instruments and "wouldn't change a thing," while Inman concluded, "I am already recommending these instruments and am planning on ordering more."

### FOR FREE INFORMATION:

800.483.7433  
www.hu-friedy.com

## PRODUCT EVALUATION SNAPSHOT

CRITERIA BASED ON AVERAGE SCORE (OUT OF 5)



HU-FRIEDY  
**HARMONY ERGONOMIC  
SCALERS AND CURETTES**

**FINAL SCORE**  
AVERAGE OF  
SECTIONS A AND B

**4.6**

Dental **PRODUCT SHOPPER**  
**BEST PRODUCT**