

Why Treat Dental Unit Waterlines?

Narrow Tubing = Microbial Colonization = Biofilm Growth

Research shows that the extremely narrow design of waterline tubing promotes water stagnation and bacterial accumulation.¹

With the DentaPure™ Cartridge, ensuring dental unit waterline safety has never been easier.

Safe

- Elemental iodine (I₂) is non-allergenic (no allergenic proteins); safe for patients to ingest.²
- Contains no harsh chemicals.
- Not restricted by the EPA Rule BMP for Dental Amalgam Waste.³
- Contains no silver.

Reliable

- Reduces the possibility of human error.
- Will not interfere with dental materials and bonding.⁴
- No concerns with dental unit corrosion or etching.⁵
- Crosstex reminds you when it's time to change cartridges.
- Same proven technology developed for NASA.

Simple

- Cost-effective.
- Compatible with bottle and municipal systems.
- Installs in minutes.
- Once installed, no monitoring or shocking protocol is required for 365 days, or 240L of water if usage records are kept.*
- Used cartridges can be disposed in regular trash.

Effective

- In independent ADA testing, the DentaPure™ Cartridge performed at ≤10 CFU/mL.⁶
- EPA registered to provide ≤200 CFU/mL.⁷



Actual biofilm images (enlarged to show detail)

Note:

While DentaPure™ Cartridges do not require monitoring, Crosstex supports all recommended/required monitoring guidance. Follow the DentaPure Cartridge IFU to ensure results within an acceptable range. Contact Crosstex for remediation support for results outside of the EPA current standard for potable water guidelines. Should your office require a periodic shock treatment, please contact Crosstex. DO NOT shock, or run anything other than potable water through a live DentaPure Cartridge.



**Free online education,
receive 1 CEU:**
CrosstexLearning.com

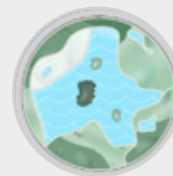
Stages of biofilm growth in untreated waterlines



**Uncontaminated
waterline**



**Biofilm formation,
early stage**



**Biofilm
maturation**

Actual size: ●
2mm

1. http://www.osap.org/?page=Issues_DUWL_1

2. Schabelman E1, Witting M. The relationship of radiocontrast, iodine, and seafood allergies: a medical myth exposed, *J Emerg Med.* 2010 Nov;39(5):701-7. doi: 10.1016/

3. <https://www.epa.gov/eg/dental-effluent-guidelines-documents>

4. Puttaiah R. Effects of Low Grade Iodine in Dental Unit Waterlines On Shear Bond Strength of a Dentin Bonding Agent, *Baylor College of Dentistry*

5. Data on File.

6. A Laboratory Evaluation of Dental Unit Water Treatment Systems. *ADA Professional Product Review - 2014: Vol 9, Iss 2: 9-17*

7. EPA Est. No. 52252-MN-001 / EPA Reg. No. 74245-5 / FDA 510K #K992893

Simplifying DUWL maintenance protocols

One DentaPure™ Cartridge = 365 days of safe, compliant, dental unit water*



Product ordering information:

Ref. #	Description	Quantity
DP365M	DentaPure™ 365-Day Municipal Cartridge	1 Each
DP365B	DentaPure™ 365-Day Independent Water Bottle Cartridge	1 Each

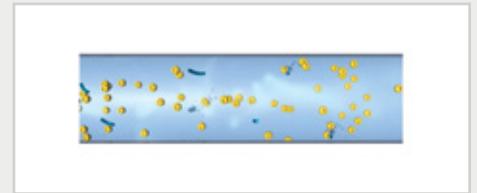
How does the DentaPure™ Cartridge work?



The DentaPure Cartridge contains non-allergenic iodinated resin beads.



As water passes through, the resin releases 2 - 6 ppm of atomic isotopes of elemental iodine (I_2) during a typical dental treatment.

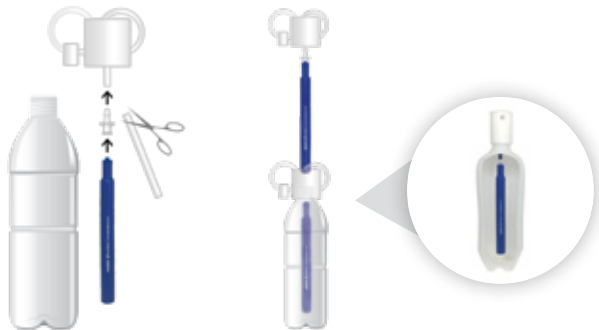


The (I_2) isotopes control the bacteria, keeping dental unit water safe for 365 days.*

Easy installation in minutes

Independent water bottle systems

The DentaPure™ DP365B Cartridge is easily installed by dental office staff via included luer fitting onto your dental unit's existing pickup tube.

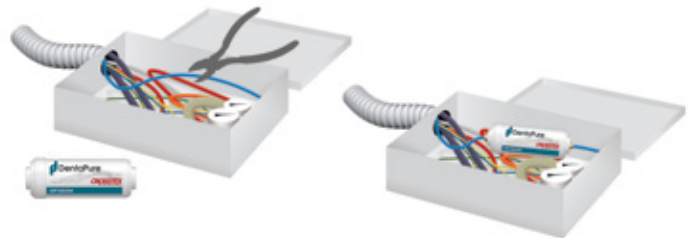


All claims made based on use with potable water.

*Or 240L of water if usage records are kept

Municipally plumbed systems

The DentaPure DP365M Cartridge for units plumbed directly to city water installs in the Jbox via included poly-flo fittings. Service Technician installation recommended.



Find out how simple installation is.

Learn more at:

 Crosstex.com/DentaPure



All product names are trademarks of Crosstex International, Inc., a Cantel Medical Company, its affiliates or related companies, unless otherwise noted. Marks not registered in all jurisdictions.

© 2020 Crosstex International, Inc. DLIT00743 Rev B 0220