



# One Cartridge. One Year of Treated Water.

- The DentaPure™ Cartridge is **EPA registered**<sup>1</sup> to provide **compliant treatment water for one year or 240L of water**, ensuring that your practice meets current **EPA microbiological water quality** standards of <500 CFU/mL.
- Significantly less maintenance - **no routine shocking, fewer protocols** and **no cartridge change outs** every few months.

For More Information, visit [HuFriedyGroup.com/DentaPure](http://HuFriedyGroup.com/DentaPure)

# DentaPure™ Cartridge Waterline Treatment



## Compliant<sup>1</sup>

- DentaPure™ DP365B and DP365M Cartridges continuously provide one-year or 240L of compliant<sup>2</sup> procedural water that meets the current EPA standard (<500 CFU/mL) for potable water.
- DentaPure™ DP40B Cartridges continuously provide 60 days 40L of compliant<sup>1</sup> procedural water.
- EPA registered to provide ≤200 CFU/mL for one-year or 240L of water.<sup>1</sup>
- FDA 510k.<sup>2</sup>
- Use is not restricted by the EPA Rule BMP for dental amalgam waste.<sup>3</sup>

## Effective

- Reduces patient and staff bacterial exposure by eluting elemental iodine into water used during patient treatment.
- Elemental iodine (I<sub>2</sub>) is non-allergenic – no protein is attached to it.<sup>4</sup>

## Simple

- For use in independent water bottles and dental units municipally plumbed to city water.
- For use with all potable water.
- Minimal maintenance required following installation.
- Fewer protocols reduce the possibility of human error.
- No routine shocking.
- Bottle-style cartridges can be quickly and easily installed by office staff.
- Dispose of depleted cartridges in the regular office trash.
- Cost-effective.

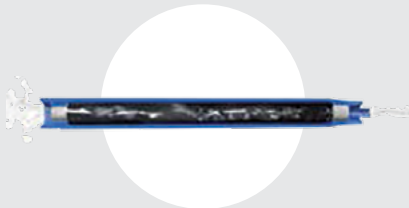
## Reliable

- Will not interfere with dental materials and bonding.<sup>5</sup>
- No concerns with corrosion or etching.<sup>6</sup>
- No harsh chemicals.
- Replacement reminder program in place.
- Dedicated DUWL technical support.

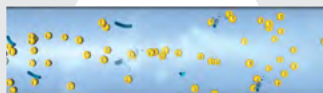
## How does the DentaPure™ Cartridge work?



The DentaPure™ Cartridge contains non-allergenic iodinated resin beads.



As water passes through, the resin releases 2 - 6 ppm of elemental iodine (I<sub>2</sub>) during a typical dental treatment.

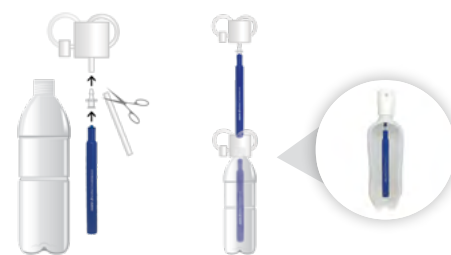


The elemental iodine controls the bacteria, keeping treatment water compliant<sup>1</sup> for 365 days.<sup>7</sup>

## Easy Installation in Minutes

### Independent water bottle systems

The DentaPure™ DP365B Cartridge is easily installed by dental office staff via included luer fitting onto your dental unit's existing pickup tube.



### Municipally plumbed systems

The DentaPure DP365M Cartridge for units plumbed directly to city water installs in the Jbox via included poly-flo fittings. Service Technician installation recommended.



All claims made based on use with potable water.

PRODUCT	SKU
DentaPure™ 365-Day Independent Water Bottle Cartridge	DP365B
DentaPure™ 365-Day Municipal Cartridge	DP365M

Find out how simple installation is, visit [HuFriedyGroup.com/DentaPure](https://www.hufriedy.com/DentaPure)

1) DentaPure™ Cartridge EPA Est. No. 52252-MN-001 / EPA Reg. No. 74245-5 / FDA 510K #K992893 2) Compliance with current EPA potable water standard <500 CFU/mL 3) <https://www.epa.gov/eg/dental-effluent-guidelines-documents> 4) Schabelman E., Witting M. The relationship of radiocontrast, iodine, and seafood allergies: a medical myth exposed, J Emerg Med. 2010 Nov;39(5):701-7. doi: 10.1016/j.jemermed.2009.10.014. Epub 2010 Jan 4. 5) Puttaiah R. Effects of Low Grade Iodine in Dental Unit Waterlines On Shear Bond Strength of a Dentin Bonding Agent, Baylor College of Dentistry 6) Data on file. 7) Or 240L of water if usage records are kept

Hu-Friedy Mfg. Co., LLC, 1666 E. Touhy Ave., Des Plaines, IL 60018 | [HuFriedyGroup.com](https://www.hufriedy.com)

All company and product names are trademarks of Hu-Friedy Mfg. Co., LLC, its affiliates or related companies, unless otherwise noted. Marks not registered in all jurisdictions.

©2022 Hu-Friedy Mfg. Co., LLC. All rights reserved. 1222