

# HuFriedyGroup Key Opinion Leader

Dr. Shayan Barootchi & Dr. Lorenzo Tavelli

Tunneled Coronally Advanced Flap Kit



## DR. SHAYAN BAROOTCHI



Focus on: **Periodontal and Peri-implant Regenerative Surgery**



Country: **USA**



Favorite Instrument: **NHDPV**



University: **University of Michigan**

## DR. LORENZO TAVELLI



Focus on: **Periodontal and Peri-implant Soft Tissue Reconstruction**



Country: **USA**



Favorite Instrument: **NHDPV**



University: **Harvard School of Dental Medicine**

## TUNNELED CORONALLY ADVANCED FLAP KIT

TCAF

A unique kit specifically designed for soft tissue grafting via the Coronally Advanced Flap (CAF), the Tunnel approach (TUN), and their combination (TCAF).

## Grafting With Science



It is all about the delicate art of soft tissue management.

Dr. Shayan Barootchi



It is just a detail, but it makes all the difference.

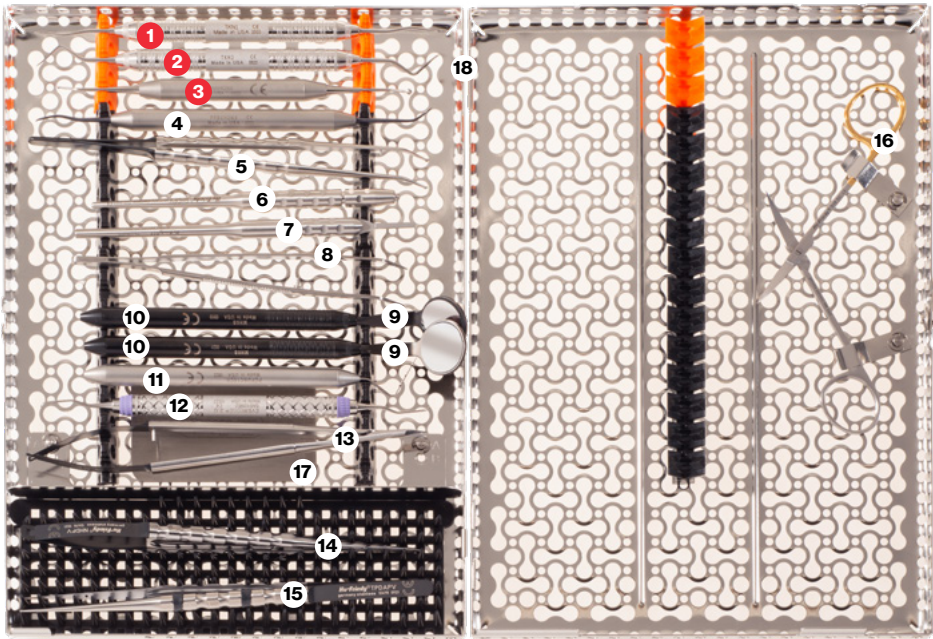
Dr. Lorenzo Tavelli



## TUNNELED CORONALLY ADVANCED FLAP KIT

### TCAFKIT

Tunneled Coronally Advanced Flap Kit



### Case 1:

Treatment of maxillary anterior gingival recessions with the Tunneled Coronally Advanced Flap (TCAF) and an allogenic dermal matrix.

See more details about this case at [HuFriedyGroup.com/TCAF](https://www.HuFriedyGroup.com/TCAF)



## TUNNELING KNIVES



### TKN1

#### Tunneling Knife 1

For incisions that remove or recontour soft tissue. Also useful to excise interproximal tissue. Featuring a tunnelling knife.



### TKN2

#### Tunneling Knife 2

For incisions that remove or recontour soft tissue. Also useful to excise interproximal tissue. Featuring a tunnelling knife.



### PMNANOSS

#### Pink Matters® Tunneling Knife

Designed to help in the creation of a partial or full thickness envelope flap during connective tissue grafting procedures in perio-plastic surgery and implant surgery.

## FLAP MANAGEMENT & SUTURING INSTRUMENTS



### PPBUH2MX

#### Modified Buser/Hourigan Periosteal, Large, Black Line

Our innovative Black Line Periosteal is designed with a matte handle and performance engineered coating to optimize performance and precision.



### SP20SLEM

#### Micro Corn Suture Pliers, Diamond Dusted

18cm. Ideal for use with guided tissue regeneration procedures.



### SHDPV

#### Microsurgical Scalpel Handle, Stainless Steel

Mini Blade Scalpel handle used for cutting gingival tissue and making surgical incisions.



7



**10-130-05E**

**5 European Scalpel Handle**

This Round Scalpel Blade Handle is used for cutting gingival tissue and making surgical incisions.

8



**DPU17**

**17 Dressing Pliers (Utility Pick-Up)**

Made with stainless steel & feature a serrated tip for a positive grip & locking mechanism.

9



**MIR5HDB**

**5 Single-Sided HD Black Line Mirror, Cone Socket**

Offers superior visibility throughout any dental procedure. The Diamond Like Carbon (DLC) coating of the handle and mirror frame reduces glare up to 80%.

10



**MH6B**

**Cone Socket Black Line Mirror Handle, Satin Steel™ Alloy**

Offers superior visibility throughout any dental procedure. The Diamond Like Carbon (DLC) coating of the handle and mirror frame reduces glare up to 80%.

11



**PCPUNC15CH**

**Qulix UNC Probe, 1-15, SE**

Single-Ended, Color-Coded Probe. Ergonomic handle. University of North Carolina.

12



**SAS1/29E2**

**Gracey 1/2 Mini Five™ Gracey Curette, #9 Handle**

Longer terminal shank, standard diameter. Double-ended handle.

13



**SPSPV**

**Microsurgical Scissor Steel, Swiss Perio**

Microsurgical Castroviejo Scissors with sharp, slightly curved working ends made for fine resections of soft tissues and trimming wound margins or mucosal grafts.

14



**NHDPV**

**Microsurgical Needle Holder**

Microsurgical Needle Holders are used to grasp and guide the needle when suturing.

15



**TPDAPV**

**Microsurgical Anatomical Tissue Pliers, Straight, Steel**

Microsurgical Tissue Pliers used to grasp and stabilize soft tissue, 18mm.

16



**S18SC**

**Iris Super Cut Curved Scissors**

Iris Curved Super-Cut scissors with 1 serrated blade used for trimming tissue or cutting sutures.

17



**ALLEN CARD**

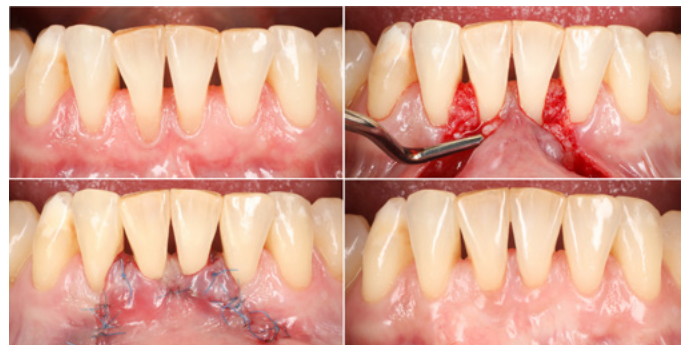
**Allen Membrane Measurement Card**

The Allen Membrane Measurement Card is used as a study, sterilizable surface to measure and trim membrane material.

**Case 2:**

Treatment of challenging mandibular anterior recessions with attachment loss, rotated teeth and deficient papillae, with the Tunneled Coronally Advanced Flap (TCAF).

See more details about this case at [HuFriedyGroup.com/TCAF](http://HuFriedyGroup.com/TCAF)





### IMN41637CF

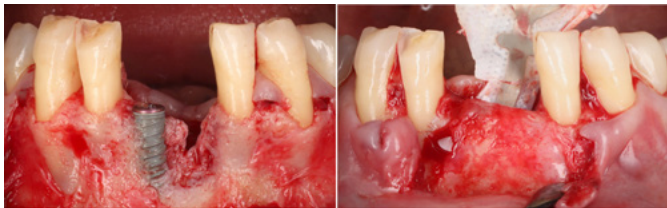
#### 16 Instrument IMS™ Infinity Series™ Cassette, Black and Orange

IMS™ Cassettes are made of long-lasting, low-maintenance stainless steel. Soft, colored silicone rails securely hold instruments throughout the processing cycle. Available in over 100 different sizes, configurations and color options, and can be specialized to meet your needs.

#### Case 3:

One of the key factors of any successful regenerative procedure is intricate management and manipulation of the soft tissues, which protect the augmented site during the vital healing phase. This shows a case of a vertical bone augmentation around a previously diseased dental implant which relies heavily on the use of minimally invasive techniques, less invasive instruments and Tunneled Coronally Advanced Flap (TCAF) with a connective tissue graft.

See more details about this case at [HuFriedyGroup.com/TCAF](https://www.hufriedy.com/TCAF)



#### Case 4:

A challenging severe gingival recession treated with a laterally moved coronally advanced flap in combination with a connective tissue graft. As with soft tissue grafting procedure, the key delicate management of the flap is key in performing a successful surgical therapy.

See more details about this case at [HuFriedyGroup.com/TCAF](https://www.hufriedy.com/TCAF)



For more information visit [HuFriedyGroup.com/TCAF](https://www.hufriedy.com/TCAF)

