



HU-FRIEDY KEY OPINION LEADER

THE SILVERSTEIN FLAP AND SUTURE CLOSURE KIT

This specialized Flap and Suture Closure Kit provides precision instruments specifically designed for today's minimally invasive soft tissue procedures. Surgical applications include soft tissue augmentation, root coverage, vestibular extension, suture removal, and stabilization of mobile marginal tissue.



Dr. Silverstein is an Associate Clinical Professor of Periodontics at the Medical College of

Georgia in Augusta, GA, lecturing both nationally and internationally on the topics of periodontal plastic surgery, implantology, tissue regenerative surgical techniques, and oral medicine. Dr. Silverstein has contributed extensively to the academic literature in his area of expertise, authoring in eight text book chapters, published in journals, as well as the highly acclaimed textbooks Principles of Dental Suturing: A Complete Guide to Surgical Closure and Principles of Soft Tissue Surgery: A Complete Step-by-Step Procedural Guide.

Dr. Silverstein is privileged to be on the contributing editorial boards of The Academy of General Dentistry Scientific Magazine, Collaborative Dental Techniques, Dentistry Today, Functional Esthetics and Restorative Dentistry, Inside Dentistry, and Practical Periodontics and Aesthetic Dentistry and has been granted Fellowships in the Pierre Fauchard Academy, the American College of Dentists, the International College of Dentists, and the American Academy of Implant Dentistry. Dr. Silverstein continues to practice in Marietta, GA.

DR. LEE SILVERSTEIN, DDS, MS, FACD, FICD

LSFSCKIT

THE SILVERSTEIN FLAP AND SUTURE CLOSURE KIT INCLUDES:

PART CODE	DESCRIPTION
IM4169	16 Instrument Signature Series® Cassette, Green
ASPB3	B3 Byrd Self-Cleaning Aspirator
MH6 (2)	#6 Satin Steel® Mirror Handle
MIR5/3	#5 Front Surface Mouth Mirror (3/pkg)
MIR5DS/3	#5 Double-Sided Mouth Mirror (3/pkg)
10-130-03	#3 Scalpel Handle
PCPUNC156	UNC Color Coded Single-Ended Probe, #6 Handle
DPU17	U17 Utility Pick-Up Dressing Plier
TP43	7x7 Adson-Brown Tissue Pliers, 12cm/4.75"
RMF	Mini Friedman Ronguers
S16SC	Goldman-Fox Super-Cut Scissors, 12.5cm/5"
NH5038	Crile-Wood Perma Sharp® Needle Holder, 15cm/6"
SYRCW	Type CW Winged Aspirating Anesthetic Syringe
SCK66	CK-6 Crane-Kaplan Scaler, #6 Handle
KK15/166	15/16 Kirkland Periodontal Knife, #6 Handle
K01/26	1/2 Orban Periodontal Knife, #6 Handle
PFIWDS16	1 Woodson Plastic Filling/Periosteal Elevator, #6 Handle
PPR36	3 Prichard Periosteal Elevator, #6 Handle
SG11/126	11/12 Gracey Curette, #6 Handle
SG13/146	13/14 Gracey Curette, #6 Handle
SPR1/26	PR1/2 Prichard Periodontal Surg. Curette, #6 Handle
S13K/TG6	13K/TG Kirkland Periodontal Chisel, #6 Handle
FS9/10S6	9/10 Schluger Curved Periodontal File, #6 Handle
IM1000 (2)	Hinged Instrument Clips, 2 Per Package



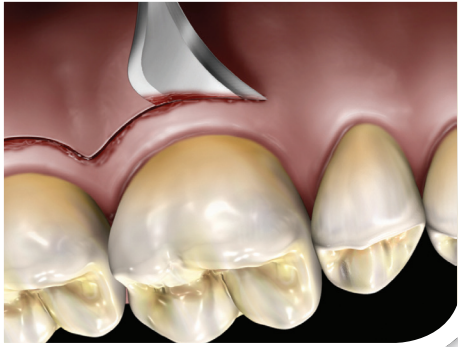
RECOMMENDED KIT ADDITIONS:

PART CODE	DESCRIPTION
PSN392V	4-0 PGA, Violet C-6 3/8 Circle 18"
PSN723V	5-0 PGA, Undyed C-19 1/2 Circle 18"

How the best perform



FLAP AND SUTURE CLOSURE PROCEDURE

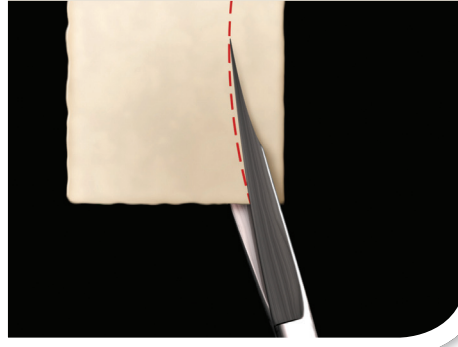


GINGIVECTOMY

Instrument: Kirkland Knife

| **KK15/166**

The Kirkland Knife, is used for performing gingivectomy type incisions and for performing distal wedge type procedures distal to the terminal tooth.

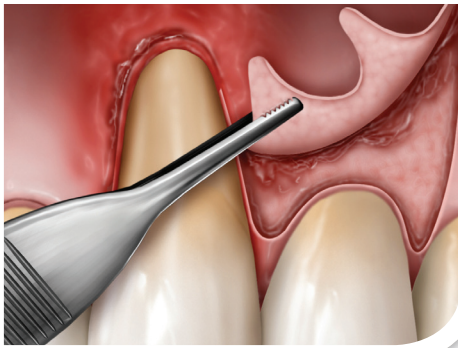


TRIMMING BARRIER

Instrument: Goldman-Fox Super-Cut Scissors

| **S16SC**

Goldman-Fox Scissors, are used to trim barriers, tissue, and granulation tissue on the underside of flaps or cut suture thread during surgery.

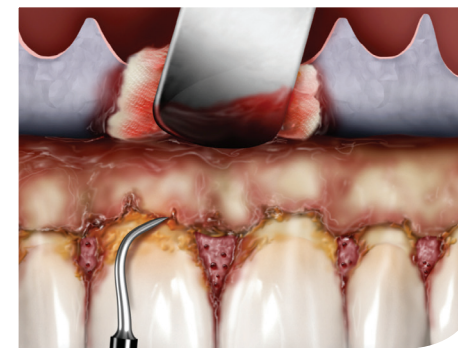


ATRAUMATIC FLAP RETRACTION

Instrument: Adson-Brown Tissue Pliers

| **TP43**

Adson-Brown Tissue Pliers are used specifically to handle surgical flaps with tactile feel atraumatically.



REFLECTION OF FULL THICKNESS FLAP

Instrument: Prichard Periosteal Elevator

| **PPR36**

The Prichard Periosteal Elevator is used to atraumatically retract surgical flaps, protect the underside of surgical flaps, and reflect light similar to a mouth mirror.

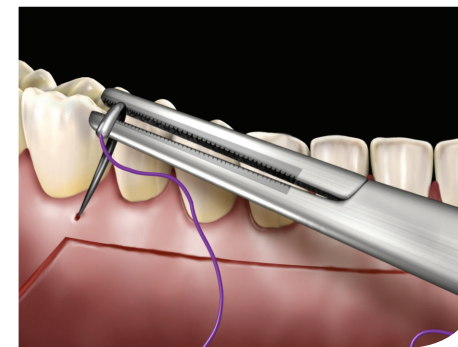


SHARP DISSECTION

Instrument: Orban Knife

| **K01/26**

The Orban Knife does not cut on the top or bottom of the instrument so it can be used to undermine soft tissue during tunneling procedures or to remove collars of tissue.



SUTURE PLACEMENT

Instrument: Crile-Wood Perma Sharp®
Needle Holder

| **NH5038**

A precision needle holder with tungsten carbide inserts is used to precisely hold a suture needle without causing damage to the cutting edge of the suture needle.

RECOMMENDED KIT ADDITIONS: SUTURES

| **PSN392V**

4-0 PGA
Violet C-6 3/8
Circle 18"

| **PSN723V**

5-0 PGA
Undyed C-19 1/2
Circle 18"



**16 Instrument
Signature Series
Cassette, Green**

| **IM4169**

Large Cassette for 16 Instruments plus additional space for accessories. Dimensions 8" x 11" x 1.25"



**B3 Byrd
Self-Cleaning
Aspirator**

| **ASPB3**

Used for precision suction at the surgical site.



**#5 Front Surface
Mouth Mirror**

| **MIR5**

Mirror with large diameter ergonomic handle for cheek and tongue retraction.



**#5 Double-Sided
Mouth Mirror**

| **MIR5DS**

Used for retraction and increased lighting to the procedural site.



#6 Satin Steel Mirror Handle

| **MH6 (2)**



#3 Scalpel Handle

| **10-130-03**

Balanced scalpel blade handle to easily maneuver in difficult-to-reach areas.



**UNC Color-Coded
Single Ended Probe**

| **PCPUNC156**

Handle: #6

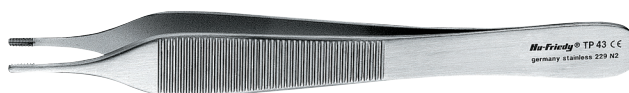
Universal probe with 1mm increments.



**U17 Utility Pick-Up
Dressing Plier**

| **DPUI7**

Utilized for picking up surgical sponges, holding suture thread for surgical knots, and placing grafts into recipient sites.



**7x7
Adson-Brown
Tissue Pliers,
12cm/4.75"**

| **TP43**

Used to handle surgical flaps delicately.



**Mini Friedman
Rongeurs**

| **RMF**

Used for the removal of granulated tissue, harvest tuberosity bone and removing bony spicules.



**Goldman-Fox
Super-Cut Scissors,
12.5cm/5"**

| **S16SC**

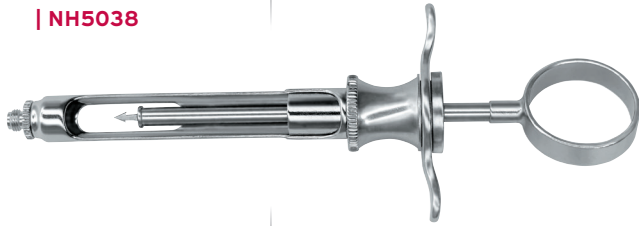
Used for the removal of granulated tissue from the underside of the interdental papilla and surgical flaps.



**Crile-Wood
Perma Sharp®
Needle Holder,
15cm/6"**

| NH5038

Featuring carbide inserts, the needle holder is used to firmly hold the suture needle without damaging the needle edges.



**Type CW Anesthetic
Aspirating Syringe,
Winged**

| SYRCW

Used for the delivery of local anesthetics.



**3 Prichard
Periosteal Elevator**

| PPR36

Handle: #6

May be used as a mirror as well as for tissue retraction.

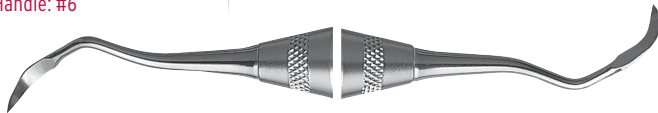


**PR1/2 Prichard
Periodontal Surg.
Curette**

| SPR1/26

Handle: #6

Used for the removal of tissue and tenacious deposits.



**CK-6 Crane-Kaplan
Scaler**

| SCK66

Handle: #6

Degranulation of interdental tissue during osseous surgery and removes heavy calculus deposits.



**15/16 Kirkland
Periodontal Knife**

| KK15/166

Handle: #6

Provides access to distal surfaces of terminal molars and used for gingivectomy incisions.



11/12 Gracey Curette

| SG11/126

Handle: #6

Angulated to reach mesial surfaces of posterior teeth.



13/14 Gracey Curette

| SG13/146

Handle: #6

Angulated to reach mesial surfaces of posterior teeth.



**13K/TG Kirkland
Periodontal Chisel**

| S13K/TG6

Handle: #6

Used for odontoplasty with prominent roots needing to be modified during periodontal plastic surgeries.



**1 Woodson Plastic
Filling/Periosteal
Elevator**

| PFIWDS16

Handle: #6

Used to reflect delicate mucogingival tissues or as a periosteal to luxate anterior teeth. The opposite end can be used to place bone grafting material in appropriate procedures.

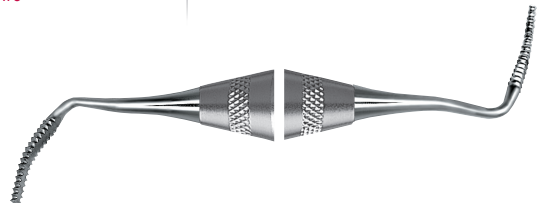


**1/2 Orban
Periodontal Knife**

| K01/26

Handle: #6

Intended to make incisions around the terminal molars and to tunnel recipient sites for soft tissue grafts.



**9/10 Schluger
Curved Periodontal
File**

| FS9/10S6

Handle: #6

Used for interdental alveoloplasty during osseous, crown-lengthening, dental implant and tori-removal surgeries.

Hu-Friedy®

Call 1-800-Hu-Friedy or visit Hu-Friedy.com for more information.

©2013 Hu-Friedy Mfg. Co., LLC. All rights reserved. Hu-Friedy, the Hu-Friedy oval logo, IMS, Perma Sharp and Signature Series are trademarks of Hu-Friedy Mfg. Co., LLC.

HF-410/0513