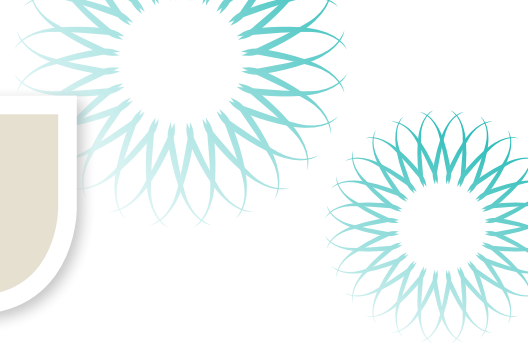







# ULTRASONIC CLEANING MONITOR

## TROUBLESHOOTING GUIDE



Result	Description	Possible Reasons for Result	Level 1: Corrective Action	Level 2: Corrective Action
 <p><b>Pass</b> (Optimum Result)</p>	Blue test soil is completely removed and no residuals are left. The result indicates sufficient cleaning achieved at the place of positioning of the Cleaning Monitor.	Optimal Result	Not Applicable	Not Applicable
 <p><b>Fail</b> (Moderate Results)</p>	Most of the test soil is being removed however some residuals of the blue spot are detected.	<ul style="list-style-type: none"> <li>• Cleaning time too short</li> <li>• Incorrect temperature for solution</li> <li>• Dosage of the cleaning solutions too low</li> <li>• Overloading or incorrect loading</li> <li>• Improper cavitation</li> <li>• Improper degassing</li> </ul>	<ul style="list-style-type: none"> <li>• Make sure the proper amount of detergent was used for your size equipment</li> <li>• Assure the time and temperature is that recommended by the detergent and equipment manufacturers</li> <li>• Check expiration date of cleaner</li> <li>• Check equipment manual for proper degassing instructions</li> </ul>	<ul style="list-style-type: none"> <li>• Adjust cleaning time and/or temperature to fit with chemistry in use                             <ul style="list-style-type: none"> <li>◦ Extend cleaning time</li> <li>◦ Increase dosage per washing cycle</li> </ul> </li> </ul>
 <p><b>Fail</b> (Critical/Poor Results)</p>	Blue test soil is largely or completely unaffected.	<ul style="list-style-type: none"> <li>• Improper/no cavitation</li> <li>• Overloading or incorrect loading</li> <li>• Cleaning time too short</li> <li>• Dosage of the cleaning solutions too low</li> <li>• No uniform distribution of detergent</li> <li>• Incorrect temperature for solutions</li> <li>• Complete breakdown of the ultrasonic equipment or the detergent</li> </ul>	<ul style="list-style-type: none"> <li>• Make sure the proper amount of detergent was used for your size equipment and mixed properly throughout the solution</li> <li>• Assure the time and temperature is that recommended by the detergent and equipment manufacturers</li> <li>• Check expiration date of cleaner</li> <li>• Repeat wash cycle using smaller load, ensure that Cleaning Monitor is not blocked by instruments</li> </ul>	<ul style="list-style-type: none"> <li>• Adjust cleaning time and/or temperature to fit with chemistry in use                             <ul style="list-style-type: none"> <li>◦ Extend cleaning time</li> <li>◦ Increase dosage per washing cycle</li> </ul> </li> <li>• Perform foil test to determine if all transducers in the unit are working                             <ul style="list-style-type: none"> <li>◦ If foil test comes back questionable, have unit serviced or replaced.</li> </ul> </li> </ul>

