



COLORVUE® OXFORD PROBE

Enhance Your Probing Efficiency

FACT

Dental implants are becoming a mainstay of dental restorative therapies. More and more dental implants are being installed every year and need to be maintained to ensure the health and functional longevity of the restorative solution.

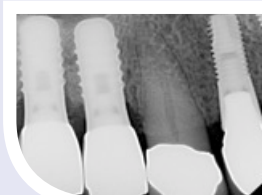
CHALLENGE

While probing depths and attachment levels is essential to determine the health of peri-implant tissues, not every set-up is equipped with a resin probe - the recommended solution for sensitive implant areas. Additionally, switching between a resin probe for implants and a metal probe for natural teeth adds time to the evaluation process.

SOLUTION

The new Colorvue® Oxford Periodontal Probe from Hu-Friedy is designed specifically for dental implant patients, featuring a metal tip with Qulix™ markings on one end and a resin tip on the other end. This double-ended instrument does the job of two probes, thus taking up less space on your tray and allowing for full probing of the entire dentition with a single instrument.

THE OXFORD PROBE IN ACTION



Radiograph of site



Clinical site with teeth and implants



Resin tip around a dental implant



Metal tip around a tooth



How the best perform





BIOGRAPHY

DR. GREGORY E OXFORD
DDS, MS, PHD

DR. GREGORY E OXFORD is a board-certified periodontist, implant and dental surgeon who has a clinical as well as research background. He is an expert and lecturer in the field of periodontology, a recipient of the American Association for Dental Research (AADR) Periodontal Research Award, the Bill Clark Research Fellowship, NIH Dental Scientist Award and a recipient of the American Academy of Periodontology (AAP) Partners in Practice Periodontal Research Award. He is a past Trustee for the AAP and Southern Academy of Periodontology, Past President of Florida Association of Periodontists and recipient of a Navy Clinical Excellence Award. A former graduate program director at the University of Florida College of Dentistry Graduate Periodontology Program, he maintains a position as Clinical Courtesy Professor.

Dr. Oxford is a graduate of Emory University School of Dentistry, completed his surgical residency in Maryland, an internship at the National Institutes of Health and received his PhD in Molecular Biology from the University of Florida College of Medicine.

MORE WAYS TO DOUBLE YOUR EFFICIENCY!

Hu-Friedy's expros feature an explorer on one end and a probe on the other end so you can swiftly move between exploring and probing without putting down and picking up different instruments. For implant probing, try one of our expros with Colorvue compatibility!



#23 EXPRO WITH COLORVUE | #12 TIP



TU17 EXPRO WITH COLORVUE® PERIOSCREEN® | #10 TIP

PART CODES FOR ORDERING

OXFORD PROBES

- PCVOKIT6** Colorvue Oxford Starter Kit with 1 UNC15 probe/PH6 handle and 6 Colorvue UNC15 tips
- PCVO12PT** Refill Pack of Colorvue Oxford Tips

EXPROS

- XP23/PH6** #23 Expro and Handle*
- XPTU17/PH6** TU17 Expro and Handle*
- PCV12PT** Refill Pack of Colorvue #12 Tips
- PPS10PT** Refill Pack of Perioscreen #10 tips

Visit us online at Hu-Friedy.com

Call 1-800-Hu-Friedy or contact your authorized Hu-Friedy representative for more information.
©2016 Hu-Friedy Mfg. Co., LLC. All rights reserved. *Colorvue tips sold separately. HF-249/0316

