



CompoSculp

| CASE STUDY BY DR. DIDIER DIETSCHI

POSTERIOR PROCEDURE



FIGURE 1

PREOPERATIVE VIEW

Defective amalgams and composite restoration in need of replacement



FIGURE 2

Rubber dam and a rubber dam clamp is placed to achieve proper isolation prior to removing defective restorations. The spatula end of the PFIDD3/4 is used to insert composite material in the distal cavity on the canine



FIGURE 4

Proximal and distal contours are shaped and marginal ridges formed with the thin, sharp ends of PFIDD9/10



FIGURE 3

The plugger end of the PFIDD3/4 is utilized next to smooth the material

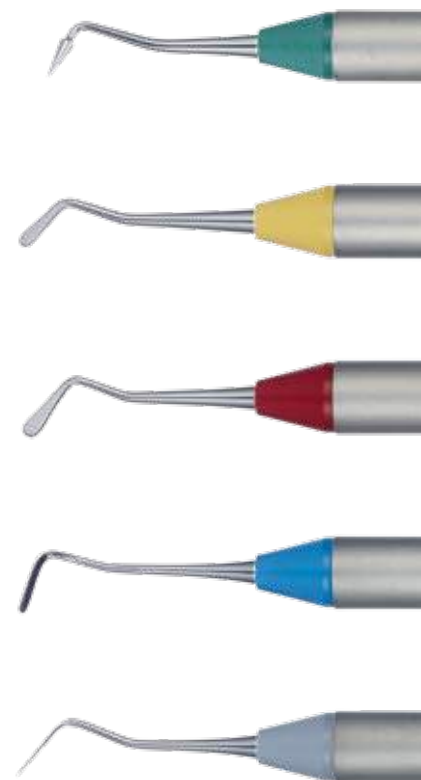


FIGURE 5

Composite is placed into the occlusal cavities using the plugger end of PFIDD3/4

Excellence and Innovation in Composite Restorations

CompoSculp instruments were designed by Dr. Didier Dietschi with the intention of aiding clinicians in achieving superior esthetic restorations. The CompoSculp kit is comprised of 5 complimentary composite instruments for both anterior and posterior restorations.



How the best perform

Hu-Friedy



FIGURE 6



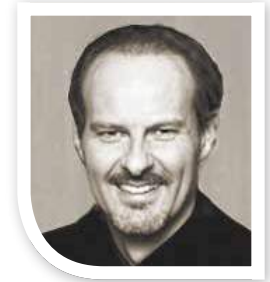
FIGURE 7

Shaping and sculpting of dentin and enamel layers is achieved utilizing the conical and explorer end of PFIDD1/2



FIGURE 8

POSTOPERATIVE VIEW



Didier Dietschi, D.M.D., PhD, Privat-Docent Specialist SVPR Associate Professor

Dr. Didier Dietschi was licensed in 1984 and got his doctoral and Privat Docent degrees in 1988 and 2004, respectively, at the University of Geneva, Switzerland. He also got a PhD degree in 2003 at the University of ACTA, Netherlands. Following a 6-year period of full time teaching and research activity in Operative Dentistry and Periodontology, he started a part time activity in a private office in Geneva, dedicated to aesthetic restorative dentistry. He holds now positions of adjunct Professor at CASE Western University (USA) and senior lecturer at the University of Geneva.

Dr. Dietschi has published more than 95 clinical and scientific papers and book chapters on adhesive and aesthetic restorations; he also co-authored the book "Adhesive Metal-free Restorations", edited in 1997 by Quintessence and translated in 7 languages. Dr. Dietschi is lecturing internationally on adhesive and aesthetic restorations.

For more information regarding Dr. Didier Dietschi's teaching agenda, please visit: www.edudentinternational.com

COMPOSCULP ORDERING INFORMATION



Part Code	Cone Color	Smooth Handle Description
PFIDD1/2	Green	Dietschi Composite #1/2
PFIDD3/4	Yellow	Dietschi Composite #3/4
PFIDD5/6	Red	Dietschi Composite #5/6
PFIDD7/8	Blue	Dietschi Composite #7/8
PFIDD9/10	Grey	Dietschi Composite #9/10
PFIDDCASS		Dietschi Composite Kit, Cassette*
PFIDDDIN		Dietschi Composite Kit, DIN Cassette**

Part Code	Grip Color	ResinEight Handle Description
PFIDD1/28	Green	Dietschi Composite #1/2
PFIDD3/48	Yellow	Dietschi Composite #3/4
PFIDD5/68	Red	Dietschi Composite #5/6
PFIDD7/88	Blue	Dietschi Composite #7/8
PFIDD9/108	Grey	Dietschi Composite #9/10
PFIDDCASS8		Dietschi Composite Kit, Cassette ^o
PFIDDDIN8		Dietschi Composite Kit, Cassette ^{oo}

*Includes: PFIDD1/2, PFIDD3/4, PFIDD5/6, PFIDD7/8, PFIDD9/10 and IM6053 (5 inst. cass.)

**Includes: PFIDD1/2, PFIDD3/4, PFIDD5/6, PFIDD7/8, PFIDD9/10 and IME14DIN53 (5 inst. DIN cassette, for European customers)

^oIncludes: PFIDD1/28, PFIDD3/48, PFIDD5/68, PFIDD7/88, PFIDD9/108 and IM6053 (5 inst. cass.)

^{oo}Includes: PFIDD1/28, PFIDD3/48, PFIDD5/68, PFIDD7/88, PFIDD9/108 and IME14DIN53 (5 inst. DIN cassette, for European customers)

Learn more about CompoSculp and Dr. Dietschi at:
HU-FRIEDY.COM/CompoSculp

©2016 Hu-Friedy Mfg. Co., LLC. All rights reserved. N2372/0117

